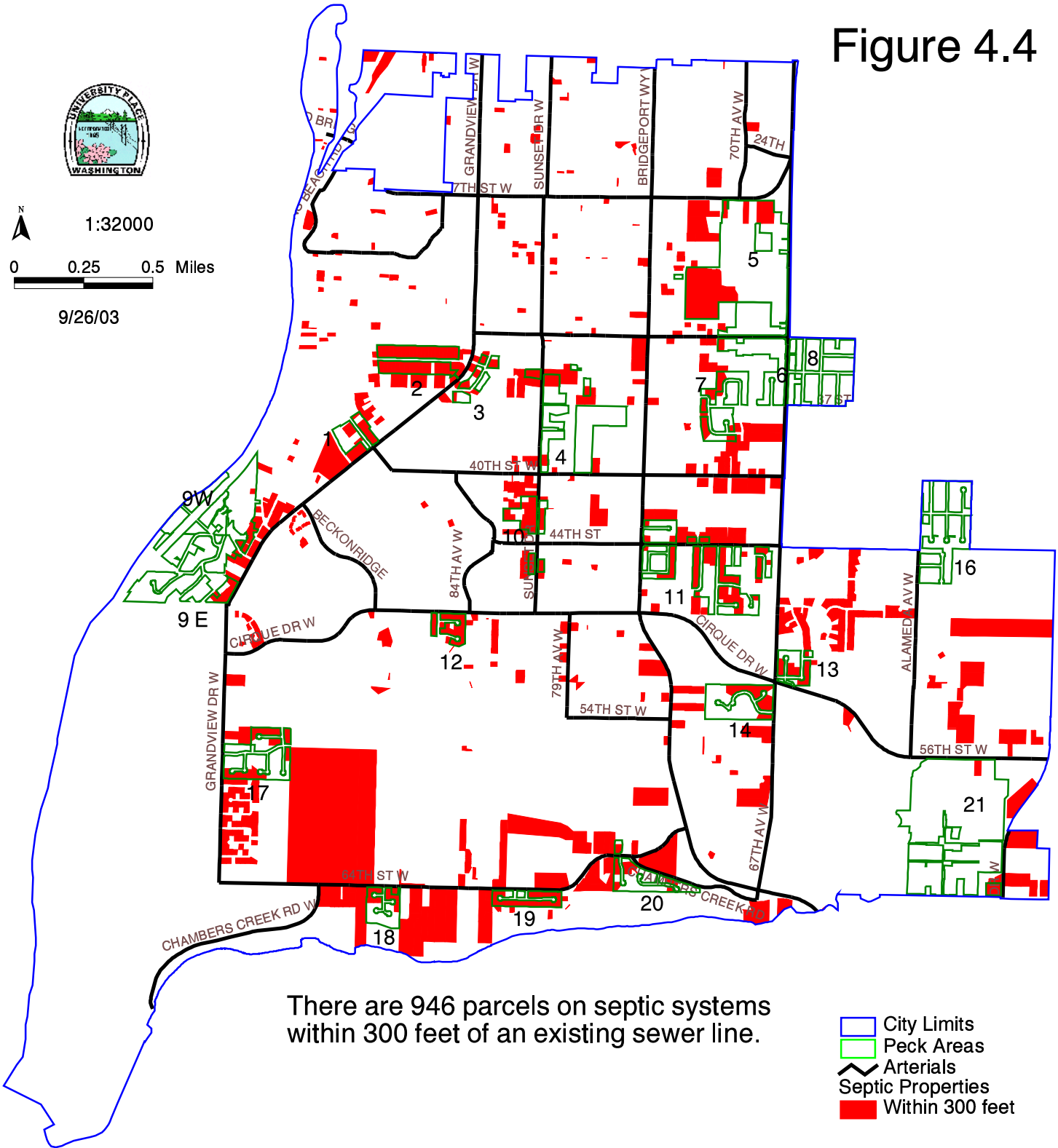


Septic Properties within 300 Feet of an Existing Sewer Line *

Figure 4.4



N
1:32000
0 0.25 0.5 Miles
9/26/03



There are 946 parcels on septic systems within 300 feet of an existing sewer line.

- City Limits
- Peck Areas
- Arterials
- Septic Properties
- Within 300 feet

Only sewer lines to which one may directly connect are considered.